

# DVT-29

Telescopic, non-insulated aerial transit van

# DUR-A-LIFT®



DVT-29 AERIAL LIFT VAN

## SPECIFICATIONS

	DVT-29
WORKING HEIGHT	<b>34'</b>
SIDE REACH	<b>21'2"</b>
APPROX. STOWED TRAVEL HEIGHT	<b>9'6"</b>
HEIGHT TO BOTTOM OF PLATFORM	<b>29'</b>
BASKET CAPACITY	<b>350#</b>
APPROX. LIFT WEIGHT	<b>1650#</b>
BOOM TRAVEL	<b>-7° to 80°</b>
EXTENSION TRAVEL	<b>108"</b>

Dur-A-Lift Inc. reserves the right to improve models and change specifications without notice or obligation. Dur-A-Lift equipment meets or exceeds all applicable ANSI Standards as of the date of manufacture.

- WORKING HEIGHT UP TO 34'; SIDE REACH TO 21'
- SINGLE-PERSON FIBERGLASS BASKET
- WALK-IN & SPLICER BASKET OPTIONS
- LOTS OF STORAGE OPTIONS



**DUR-A-LIFT®**  
WE SPEAK BUCKET TRUCK

# DVT-29

Telescopic, non-insulated aerial transit van

**DUR-A-LIFT**  
WE SPEAK BUCKET TRUCK



## STANDARD

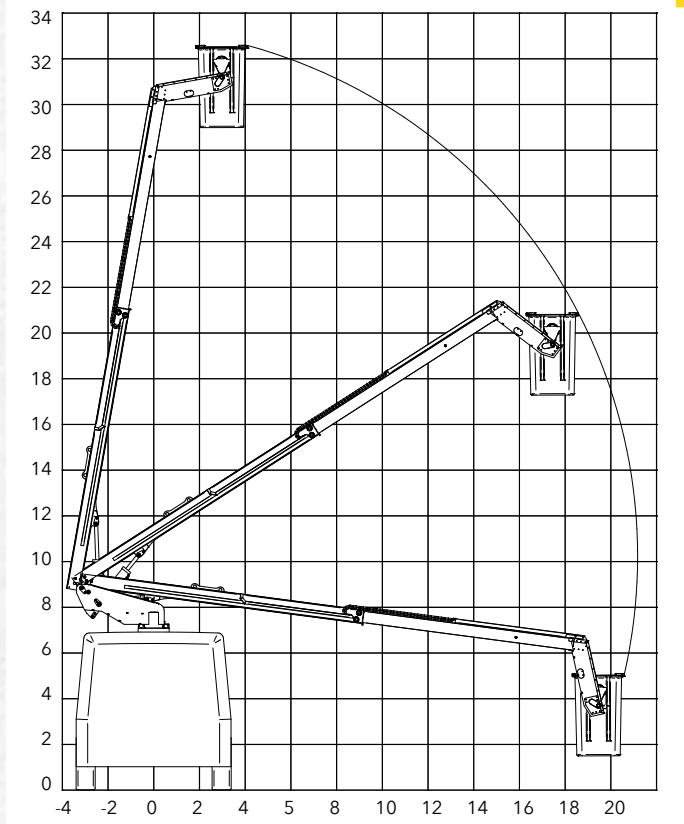
Adjustable wear blocks on main boom; 110V outlet basket; environmentally sealed toggle switches; greaseless bearings; 370° non-continuous rotation; electric over hydraulic controls; Upper/lower controls with lower override; maximum operating pressure of 2,250 PSI; 5"x7" rectangular steel main boom; 4"x6" rectangular aluminum extension boom



## OPTIONAL

Hydraulic basket leveling with trim switch at basket; walk-in basket; full function DC backup; lower remote controls; lower hydraulic basket stow/dump; lower start/stop; electric joystick; tail shelf; basket cover; tool tray; basket heater; fold down seat; splicers basket; battery power; fan belt clutch pump power.

## REACH DIAGRAM



READ MORE

**AMP**  
www.AMPrents.com  
Overhead Utility Equipment Sales and Rentals  
AMP Sales & Service, LLC dba AMP Rentals

740 Industrial Blvd, Bedford VA 24523  
1+ (540) 586-1021  
www.AMPrents.com