

DTAX2 SERIES

Models: DTAX2-44, DTAX2-42, DTAX2-39

DUR-A-LIFT®



DTAX2-42 PICTURED

SPECIFICATIONS

	DTAX2-44	DTAX2-42	DTAX2-39
WORKING HEIGHT	49'	47'	44'
SIDE REACH	30'	28'	28'
APPROX. STOWED TRAVEL HEIGHT	10'	10'	10'
HEIGHT TO BOTTOM OF PLATFORM	44'	42'	39'
BASKET CAPACITY	350#	400#	400#
APPROX. LIFT WEIGHT	2585#	2450#	2235#
ARTICULATING ARM TRAVEL	-5° to 81°	-5° to 81°	-5° to 81°
MAIN BOOM TRAVEL	-25° to 75°	-25° to 75°	-25° to 75°
EXTENSION TRAVEL	122.5"	110.5"	110.5"

Dur-A-Lift Inc. reserves the right to improve models and change specifications without notice or obligation. Dur-A-Lift equipment meets or exceeds all applicable ANSI Standards as of the date of manufacture.

- TELESCOPIC ARTICULATING, PERSONNEL
- WORKING HEIGHT UP TO 49'
- SIDE REACH TO 30'
- UP TO 400 POUND BASKET CAPACITY
- 180-DEGREE BASKET ROTATOR
- COMPACT DESIGN AND STOWING
- OPTIONS AVAILABLE FOR USE WITH 9' BODY
- INSULATED (DTAX2) OR NON-INSULATED (DTAX2S)

MANY WAYS TO CUSTOMIZE!

DUR-A-LIFT®
 WE SPEAK BUCKET TRUCK

DTAX2 SERIES

Models: DTAX2-44, DTAX2-42, DTAX2-39

DUR-A-LIFT
WE SPEAK BUCKET TRUCK

Reach up to 47 feet without the use of outriggers with the DTAX2-42



STANDARD

CONTROLS: Proportional controls; lower controls with override located at the turntable; engine start/stop from the basket; individual control levers.

HYDRAULIC SYSTEM: Rated pressure is 2200 PSI; operating pressure is 2000 PSI; open center hydraulic system; 180° rotating basket.

MECHANICAL SYSTEM: Telescoping and articulating boom action; offset main boom reduces travel height; shear ball rotation driven; fully enclosed worm gear box; non-continuous rotation; insulated extension boom 46kv (DTAX2); 24"x24"x42" basket; 110v outlet at upper controls (DTAX2S).

OPTIONAL

Single hand joystick upper control; outrigger or torsion bars; 12v D.C. backup; fixed basket position (side or end); basket offered in various sizes and configurations; basket liner 50kv (DTAX2); main boom fiberglass insert (DTAX2); chassis isolator art boom fiberglass insert (DTAX2); continuous rotation; tool trays of various sizes; basket and control cover; upper and lower hydraulic tool circuits; tail shelf with walkup.



INSULATED/NON-INSULATED

Available in insulated or non-insulated formats. (Full pressure controls)

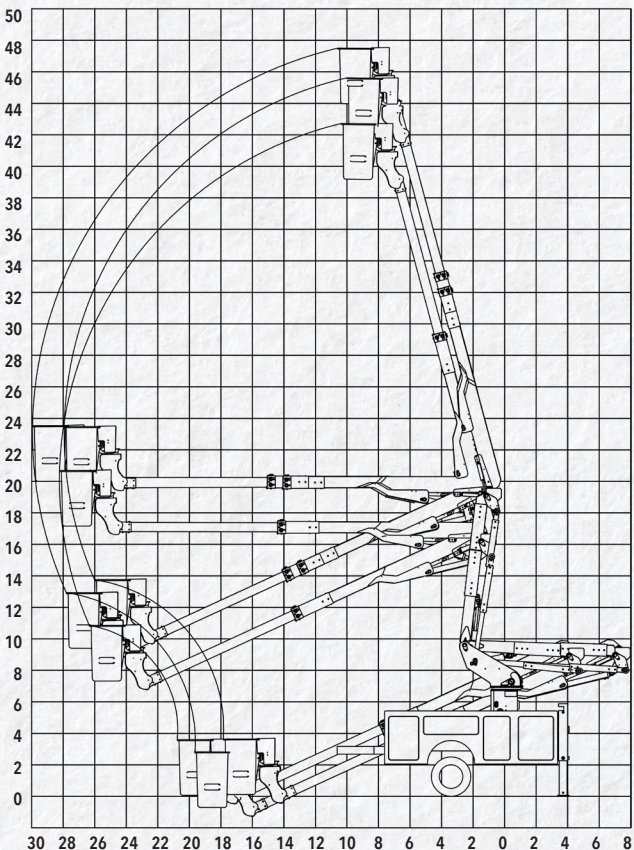
DTAX2: insulated (Category C or D)
DTAX2S: non-insulated



Fiberglass or aluminum 24"x24"x42" basket with walk-in option

Ask about larger basket options,

REACH DIAGRAM



CHASSIS REQUIREMENT, MIN.: 15,000 GVWR (DTAX2-39/42); 19,000 GVWR (DTAX2-44)
CHASSIS CAB TO AXLE REQUIREMENT, MIN.: 60"-84" (DTAX2-39); 84" (DTAX2-42/44)



Negative boom angle allows for ground level access from the basket.

BUILT FOR YOU

Ask about available chassis, body, tailshelf, and basket options.



READ MORE

AMP
www.AMPrents.com
Overhead Utility Equipment Sales and Rentals
AMP Sales & Service, LLC dba AMP Rentals

740 Industrial Blvd, Bedford VA 24523
1+ (540) 586-1021
www.AMPrents.com