

# DO SERIES

Models: DO-36, DO-32

# DUR-A-LIFT®



DO-32 PICTURED

## SPECIFICATIONS

|                              | DO-36      | DO-32      |
|------------------------------|------------|------------|
| WORKING HEIGHT               | 41'        | 37'        |
| SIDE REACH                   | 30'4"      | 26'4"      |
| APPROX. STOWED TRAVEL HEIGHT | 9'8"       | 9'8"       |
| HEIGHT TO BOTTOM OF PLATFORM | 36'        | 32'        |
| BASKET CAPACITY              | 350#       | 350#       |
| APPROX. LIFT WEIGHT          | 2500#      | 2400#      |
| LOWER BOOM TRAVEL            | 0° to 100° | 0° to 100° |
| UPPER BOOM TRAVEL            | 0° to 196° | 0° to 196° |
| INSULATION GAP               | 12.25'     | 12'        |
| UPPER BOOM FIBERGLASS LENGTH | 15'2"      | 12'10"     |

- ARTICULATING OVERCENTER
- WORKING HEIGHT UP TO 41'
- SIDE REACH TO 30'4"
- FIBERGLASS OR ALUMINUM BASKET
- INSULATED (DO) OR NON-INSULATED (DOS)

Dur-A-Lift Inc. reserves the right to improve models and change specifications without notice or obligation. Dur-A-Lift equipment meets or exceeds all applicable ANSI Standards as of the date of manufacture.

**DUR-A-LIFT®**  
 WE SPEAK BUCKET TRUCK

# DO SERIES

Models: DO-36, DO-32

**DUR-A-LIFT**  
WE SPEAK BUCKET TRUCK



DO-32

## STANDARD

**CONTROLS:** Full pressure proportional controls; upper control shut-off provided at the turntable; three control levers at the turntable and basket; deadman at the basket; engine start/stop from the basket.

**HYDRAULIC SYSTEM:** Open-center system; rated pressure is 2200 PSI; operating pressure is 2000 PSI; 5 to 7 GPM pump flow; 11 gallon oil reservoir.

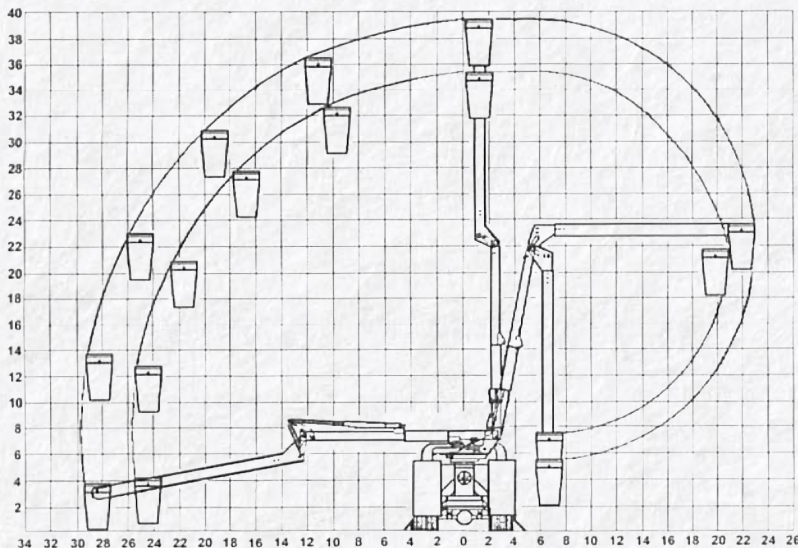
**MECHANICAL SYSTEM:** Basket-leveling by glass rods and chain parallelogram system with easy service access; rotation by hydraulically driven spur gear with shear-ball rotation bearing; basket support.

**SAFETY FEATURES:** Integral holding valves in each cylinder; pressure relief valve; non-conductive hoses and fiberglass rods provide leveling and control through the insulated boom section; upper-boom constructed of fiberglass and rated for work voltages to 46 kv and below; emergency stop system.

## OPTIONAL

Continuous rotation; pedestal mounted outriggers; torsion bar; 12v DC full-function backup system; single-hand control lever; basket liner; basket and control cover; hydraulic tool circuit at basket and pedestal; basket tilt system; automatic or two-speed throttle advance; upper-boom electrical test bands; lower-boom fiberglass insert; lower-boom lifting hook.

## REACH DIAGRAM



CHASSIS REQUIREMENT, MIN.: 15,000 GVWR\*  
CHASSIS CAB TO AXLE REQUIREMENT, MIN.: 60"

\*Minimum GVWR will change significantly depending on make of chassis and stabilizer option.



DO-36 PICTURED

**BUILT FOR YOU**  
Ask about available chassis, body, tailshelf, and basket options.



READ MORE

**AMP**  
www.AMPrents.com  
Overhead Utility Equipment Sales and Rentals  
AMP Sales & Service, LLC dba AMP Rentals

740 Industrial Blvd, Bedford VA 24523  
1+ (540) 586-1021  
www.AMPrents.com