

# DCP SERIES

CABLE PLACER AERIAL LIFT

# DUR-A-LIFT®



PICTURED: DCP-36

## SPECIFICATIONS

	DCP-36 TELESCOPIC ARTICULATED	DCP-29 TELESCOPIC
WORKING HEIGHT	41'	34'
SIDE REACH	26'6"	22'6"
APPROX. STOWED TRAVEL HEIGHT	10'1"	10'5"
HEIGHT TO BOTTOM OF PLATFORM	36'	29'
BASKET CAPACITY	350#	350#
APPROX. LIFT WEIGHT	2675#	2125#
MAIN BOOM TRAVEL	-25° to 75°	-25° to 75°
ARTICULATING ARM TRAVEL	-6° to 83°	--
EXTENSION TRAVEL	110.5"	110.5"
SIDE PULL	400#	400#
DOWN PULL	50#	50#

Dur-A-Lift Inc. reserves the right to improve models and change specifications without notice or obligation. Dur-A-Lift equipment meets or exceeds all applicable ANSI Standards as of the date of manufacture.

- WORKING HEIGHT UP TO 41'; SIDE REACH TO 26'6"
- 400# SIDE PULL; 50# DOWN PULL
- FAIRLEADS FOR CABLE LASHING
- DIRECT COMMUNICATION BETWEEN OPERATOR AND DRIVER
- OPERATES IN MOBILE OR STATIONARY MODE



**DUR-A-LIFT®**  
WE SPEAK BUCKET TRUCK



# DCP SERIES

CABLE PLACER AERIAL LIFT

**DUR-A-LIFT**<sup>®</sup>  
WE SPEAK BUCKET TRUCK



Tons of storage options specially designed for those in the telecom and utilities industries.



DCP-29

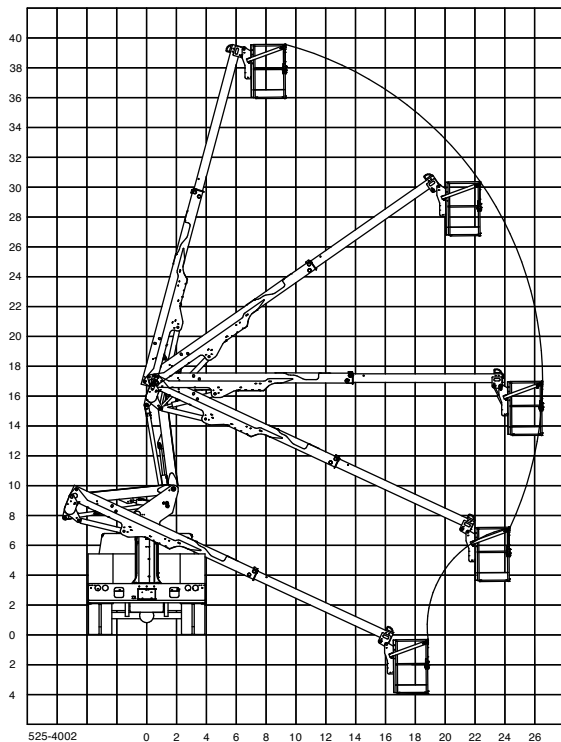
## STANDARD

Operates in stationary and mobile mode; steel extension boom; 24" x 30" x 42" steel galvanized basket with fairleads; yoke end-mounted walk-in basket with door; 370° hydraulic limit, non-continuous rotation; dual cross over relief reduces rotation overloads; hydraulic leveled basket; pistol-grip lower remote control-boom functions, lower stow, start/stop, two speed; single-hand upper control joystick; upper and lower basket to cab intercom communication system; 110 volt outlet at basket; open-center hydraulic system



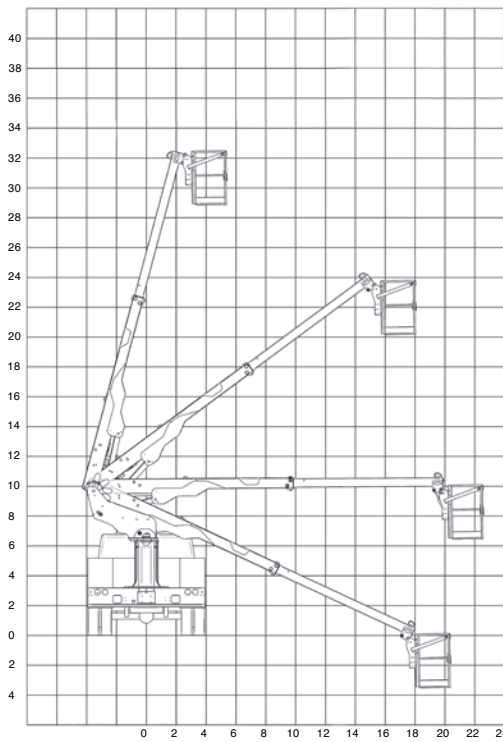
DCP-29

## REACH DIAGRAM DCP-36



CHASSIS REQUIREMENT, MIN.: 15,000 GVWR  
CHASSIS CAB TO AXLE REQUIREMENT, MIN.: 84"

## REACH DIAGRAM DCP-29



CHASSIS REQUIREMENT, MIN.: 14,000 GVWR  
CHASSIS CAB TO AXLE REQUIREMENT, MIN.: 84"



*Dur-A-Lift's rugged cable placer unit is capable of withstanding the harsh applications of mobile operation. The smooth, easy to operate control system is packed with behind the scenes safety elements.*



DCP-36



READ MORE

**AMP**  
www.AMPrents.com  
Overhead Utility Equipment Sales and Rentals  
AMP Sales & Service, LLC dba AMP Rentals

740 Industrial Blvd, Bedford VA 24523  
1+ (540) 586-1021  
www.AMPrents.com