

ACHIEVER

RT-02 DD DIGGER DERRICK

Power & Traction in Action

DIMENSIONS / WEIGHT	
Overall Length	220" With boom in storage position
Overall Width	101" With outriggers in storage position
Overall Height	118" With boom in storage position
Ground Clearance	16"
Weight & Payload	
- Basic Vehicle	16,650 lbs (Base vehicle with derrick)
- GVW	24 000 lbs
Deck Area	48 ft ² (approx. 87" x 80")

PERFORMANCE DATA	
Maximum speed	8 mph
Inside turning radius	0 ft.
Climbing Ability	
- Uphill	40° (90%)
- Side-hill	20° (45%)
Ground Pressure (empty)	2.29 PSI at 6" penetration (no load)
Ground pressure (loaded)	2.82 PSI at 6" penetration (loaded)
Normal Driving Range	12 Hours

ENGINE	
Make	Deutz AG
Model	TCD 3.6 L4, 4 cylinder Turbo Charged Diesel
Horsepower	134 HP @ 2 300 RPM
Displacement	3.6 liters
DEF Tank	2.6 gallons
Fuel capacity	40 gallons
Torque	369 ft lbs @ 1 600 RPM
Average fuel consumption	4 gallons per hour

FRAME / SUSPENSION	
Type	Corten Welded Tub
Axles	Torsion Axle
Tires	Solid Rubber

- Suspension system comes with:**
- 2 independent idler wheels with oil hubs and steel face seals
 - 8 solid wheels with grease hubs & dust cap retainers
 - 2 rear drive sprockets

TRACKS	
	Rubber 5 ply belts with 29" rubberized aluminum crosslinks

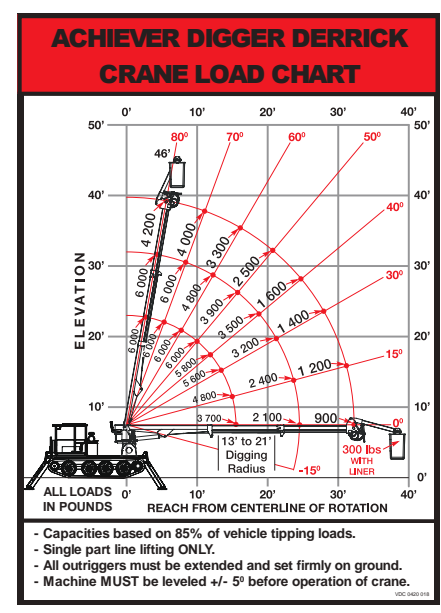
STEERING	
	Independent dual joysticks with cable control for each track.

ELECTRICAL	
Voltage	12 V
Batteries, Capacity	2 x 1,060 CCA
Alternator Capacity	120 Amps

POWER TRAIN FOR HYDROSTATIC DRIVE	
Transmission	Hydrostatic, 2-speed
Parking Brakes	Multi-disc, spring applied & pressure released
Service Brakes	Positive deceleration via hydrostatic transmission

- STANDARD FEATURES**
- 24 000 lb ROPS Certified
 - 2 Set of Parts & Service Manuals
 - Longer 59" hydraulic radial outriggers w/18"x20" pads
 - LED High powered lights, Strobe on top

- CRANE SPECIFICATIONS**
- 40 ft. sheave height
 - Bucket reach 47 ft
 - 6,000 lbs capacity tip winch
 - Fully hydraulic 2nd and 3rd boom extension
 - Level gauges on tower (2)
 - 5 Function Automatic Hydraulic Overload Protection
 - 12,000 ft lb auger drive with 2 speed settings
 - Auger over storage protection
 - 4 way pole claw
 - 9/16" Nylon winch rope with swivel hook
 - Auger digging: Radius 11' to 19'
 - Lifting Capacity 6,000 lbs @ 10' radius



OPTIONAL EQUIPMENT & ACCESSORIES*				
<p>Cab Options</p> <ul style="list-style-type: none"> • F.O.P.S. Certified Cab • Closed cab with windshield wiper, recirculation fan and heater • Premium cab sound and heat insulation • LHS rear view mirror • LHS rear view mirror with electric heat • RHS rear view mirror • Rear view camera system • Sun visor • 6,000 btu air conditioning • Opening sunroof • Front brushguard • Front and side brushguards for open cab 	<p>Cold Weather Options</p> <ul style="list-style-type: none"> • 120v hydraulic oil heater • Espar coolant heater • 120v Battery heaters • Coolant heater for hydraulic oil • Coolant heater for fuel tank <p>Lighting Options</p> <ul style="list-style-type: none"> • Additional rear LED light • Remote control spotlight • Outrigger mounted clearance lights • DOT Road lighting • Additional scene lighting 	<p>Engine Options</p> <ul style="list-style-type: none"> • Spark arrestor • Raised air intake <p>Outrigger Options</p> <ul style="list-style-type: none"> • Extra long (71 in) outriggers (allow deck levelling to within 5° on 12° slopes) • Outrigger pads with ice cleats <p>Track Options</p> <ul style="list-style-type: none"> • Road wheel oil hubs • Track ice claws • 33" rubber tracks 	<p>Subframe Options</p> <ul style="list-style-type: none"> • 7' Anchor drive tool holder (tools available) • Anchor drive adapter holder (tools available) • Deck hose reel with insulated 30' hoses • High/low pressure deck tools for use with pole jacks • Hydraulic pole jack with tooling and holder • Grounding reel • 1 000 lb cable reel carrier • Front 2 way plow • Front 2 way plow with float • Front plow top extension • Front bumper in lieu of plow • Spare auger holder • Pintle hook 	<p>Winch Options</p> <ul style="list-style-type: none"> • 16,500 lb movable electric winch • 18,000 lb hydraulic winch <p>Boom Options</p> <ul style="list-style-type: none"> • Folding bucket attachment with full pressure top controls • 2nd pin on bucket • Fiberglass 3rd & 4th boom insulated for Category "C" 46 kVA • Material handling jib • Phase lifter for jib • 12v dc emergency pump • Hydraulic auger release • Dirt or rock augers

* Other features on request. The specifications given are for a basic vehicle tested under ideal conditions. The manufacturer reserves the right to change specifications without notice.



AMP
www.AMPrents.com
Overhead Utility Equipment Sales and Rentals
AMP Sales & Service, LLC dba AMP Rentals

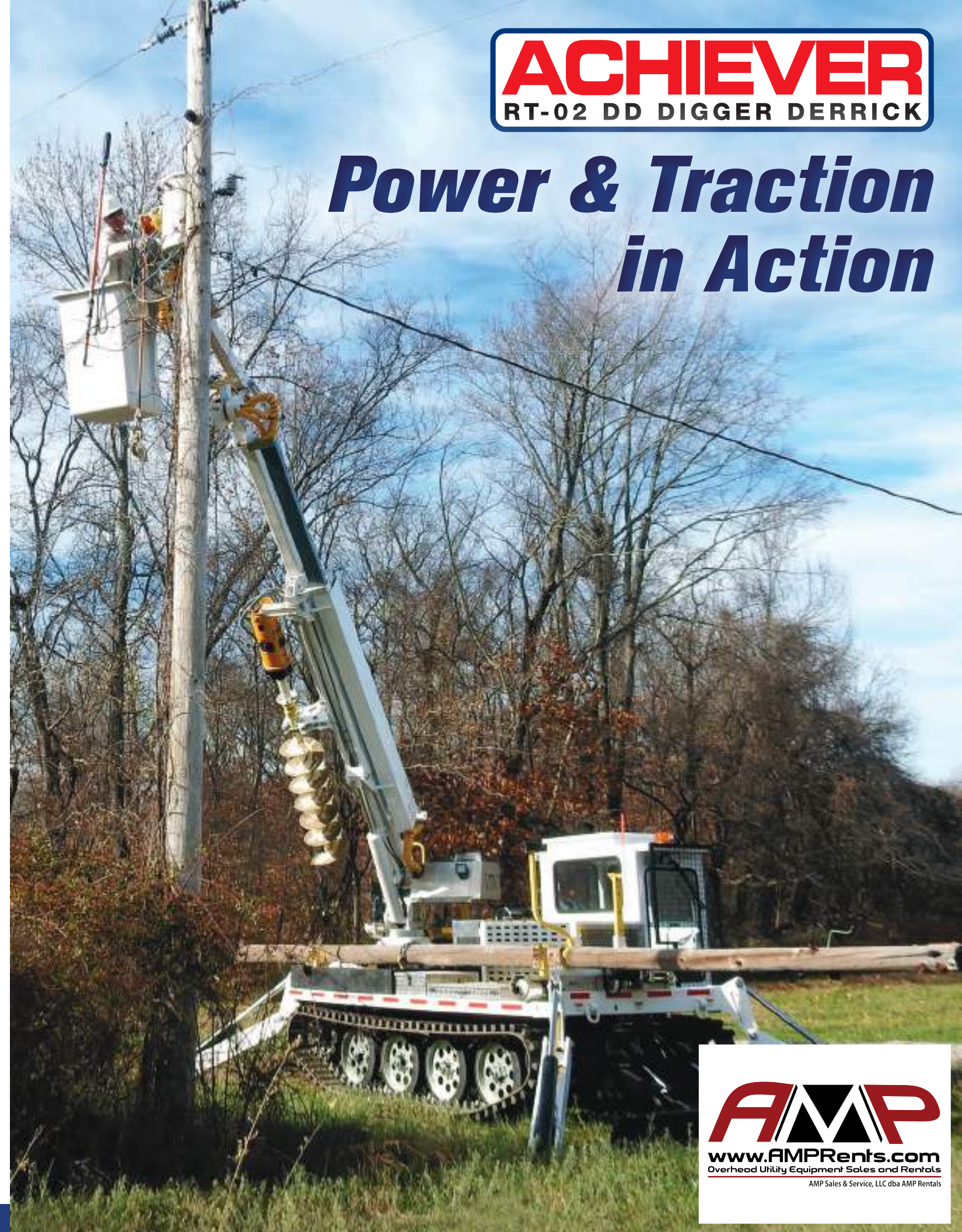
740 Industrial Blvd
Bedford, VA 24523
1-540-586-1021 | AMPrents.com

FEBRUARY 2022

ACHIEVER

RT-02 DD DIGGER DERRICK

Power & Traction in Action



AMP
www.AMPrents.com
Overhead Utility Equipment Sales and Rentals
AMP Sales & Service, LLC dba AMP Rentals

OUR RUBBER TRACKED DIGGER DERRICK IS DESIGNED TO SAVE YOU TIME AND MONEY



The only derrick on the market that can climb a 40 degree slope with a low center of gravity to provide excellent sideslope stability



The Achiever can set up to 70' poles



6,000 lb boom tip winch
On fiberglass 3rd boom, Insulated



The optional material handling jib can lift up to 600 lbs



The insulated bucket has a 47' reach and comes with full pressure controls and an optional tool outlet and jib



Low ground pressure means excellent flotation on soft ground



The optional closed cab comes with a front wiper, heater and two opening windows



The Achiever's advanced track and suspension design and powerful engine allow it to go almost anywhere



RT-02 DD Tracked Digger Derrick is easily transportable to jobsite on a dual axle trailer behind a single axle bucket truck