

Achiever DPM-52 DU 55 ft Tracked Aerial with Jib DUAL UNIT BOOM SPECIFICATIONS

<u>GENERAL DATA</u>			
Max. working height	55'	Basket capacity	
Max. side reach	31'-6"	(Jib not in use)	550 lbs
Stowed travel height	9'-3" (approx.)	(Jib in use)	400 lbs
Extension boom travel	120"	Max. jib and winch capacity	1,000 lbs
Main boom travel	-35° to +80°	Base installed weight	16,650 lbs (approx.)
Articulated boom travel	-0° to +80°		
<u>STANDARD FEATURES</u>			
Side mount winch and jib	24" x 42" x 42" fiberglass basket with step	Basket rotator, winch, and jib controls with lockouts in upper control pod	
Rubber boom support	Fiberglass extension boom	Lower control levers with upper control override	
Shear ball rotation gear	Proportional, open center hydraulic controls	Lower winch control	
Safety harness and 6' decelerating lanyard	360° continuous rotation	Deck step basket mounting	
180° basket rotator	10 micron filter in return line	Hydraulic jib tilt	
Hyd leveled basket (power stow at upper controls)	Hydraulic basket leveling at lower controls (2nd location)	Manual jib extension	
Upper 4 axis single hand joystick control lever		Non-relube, maintenance-free bushings, spherical cylinder rod ends	
		Engine start/stop from basket	
		46 KV category "C" insulation	
		24" pedestal height for tracked vehicle mounting	
		Epoxy primer with white finish color	
		Two maintenance/operators manuals	
		One year parts and labor warranty	
<u>AVAILABLE BOOM OPTIONS</u>			
Boom:	Main boom fiberglass insert (provides 14" of insulation when fully retracted)	Electrical:	Controls w/high electrical resistant components (HERC) - required for category "C"
	Articulating arm glass insert (12" insulation gap)		Boom overstay protection
Basket:	Basket liner w/step (24" x 42" basket)	Hydraulic:	12 volt emergency hydraulics: boom rotation, lowering and all outrigger functions
	Rigid basket cover with lanyard		Hydraulically extendible jib
	Rigid basket & upper control cover w/lanyard		Tool circuit at basket, manual control
	Tool tray (8" X 19" X 9")		Tool circuit at base, manual control
	Tool tray (9" X 14" X 18")	Miscellaneous:	Hose reel on deck
	Tool tray fiberglass (7" x 7" x 16")		Additional manuals
Controls Mounted between Basket & Boom		All Specifications + or - 2%	
CARRIER OPTIONS on PAGE 2			

Achiever DPM-52 DU 55 ft Tracked Aerial with Jib

CARRIER SPECIFICATIONS

<p><u>DIMENSIONS / WEIGHT</u></p> <p>Overall length 251" boom tip to bucket end 185" between stowed outriggers</p> <p>Overall width 101" without side ladders</p> <p>Height 111" to top of stowed boom</p> <p>Ground clearance 16"</p> <p>Weight 16,650 lbs base vehicle</p> <p>GVWR 24,000 lbs</p> <p>Deck (optional) 43 ft² (approx. 72"L x 87"W")</p> <p><u>PERFORMANCE</u></p> <p>Maximum speed 8 mph loaded</p> <p>Turning radius 0 ft</p> <p>Climbing ability</p> <p style="padding-left: 20px;">- Uphill 40° (84%)</p> <p style="padding-left: 20px;">- Side-hill 15° (27%)</p> <p>Ground pressure</p> <p style="padding-left: 20px;">2.29 PSI (no load) 29" tracks</p> <p style="padding-left: 20px;">2.63 PSI (loaded) 29" tracks</p> <p style="padding-left: 20px;">2.0 PSI (no load) 33" tracks</p> <p style="padding-left: 20px;">2.3 PSI (loaded) 33" tracks</p> <p>Working range 12 hours (no load)</p> <p><u>ENGINE</u></p> <p>Make Deutz AG Tier 4</p> <p>Model TCD 3.6 L4, 4 cylinder turbo charged diesel</p> <p>Horsepower 134 HP at 2,300 RPM</p> <p>Torque 369 ft lbs at 1,600 RPM</p> <p>Displacement 3.6 liters</p> <p>Fuel capacity 40 gals</p> <p>DEF tank 2.6 gals</p>	<p><u>FRAME / SUSPENSION</u></p> <p>Type Welded tub</p> <p>Axle Torsion axle</p> <p>Tires Solid rubber</p> <p>Suspension system:</p> <ul style="list-style-type: none"> ➤ 2 independent idler wheels with oil bath hubs ➤ 8 solid wheels with grease hubs and 8 dust cap retainers ➤ 2 rear drive sprockets <p><u>POWER TRAIN FOR HYDROSTATIC DRIVE</u></p> <p>Transmission Hydrostatic, 2-speed</p> <p>Service Brakes Positive deceleration through the hydrostatic transmission</p> <p>Parking Brakes Multi-disc, spring applied & pressure released</p> <p><u>ELECTRICAL</u></p> <p>Voltage 12 V</p> <p>(2) batteries, capacity 2x 1,060 CCA</p> <p>Alternator capacity 120 Amps</p> <p>Ground Negative</p> <p><u>TRACKS</u></p> <p>5-ply rubber belts with 29" rubber cross links with heat treated aluminum inserts</p> <p><u>STEERING</u></p> <p>Independent dual joysticks with cable control for each track</p>		
<p><u>STANDARD FEATURES</u></p> <table style="width: 100%; border: none;"> <tr> <td style="width: 50%; border: none; vertical-align: top;"> 1-Man open cab ROPS certified to 24,000 lbs Roll Over Protection Structure ISO 3471:2008 Seat with mechanical suspension, 2-point seat belt Full instrumentation, illuminated panel gauge Fire extinguisher, backup alarm and horn High powered LED lights: 2 front & 1 rear on cab, 1 strobe on top, rear back up light Cab entrance step, 2x removable side deck ladders 120v block heater & glow plugs, muffler 12v primary fuel filter heater </td> <td style="width: 50%; border: none; vertical-align: top;"> Secondary fuel filter with water separator Oil cooler for hydraulic reservoir Electric engine shut down system 2" receiver socket, front and rear Front and rear rectangular ground lugs (4) 59" radial outriggers w/18"x20" feet, 45° mounts (4) 18,000 lb D-rings Wooden side wall/deck 2 sets of parts & service manuals Standard one year warranty </td> </tr> </table>		1-Man open cab ROPS certified to 24,000 lbs Roll Over Protection Structure ISO 3471:2008 Seat with mechanical suspension, 2-point seat belt Full instrumentation, illuminated panel gauge Fire extinguisher, backup alarm and horn High powered LED lights: 2 front & 1 rear on cab, 1 strobe on top, rear back up light Cab entrance step, 2x removable side deck ladders 120v block heater & glow plugs, muffler 12v primary fuel filter heater	Secondary fuel filter with water separator Oil cooler for hydraulic reservoir Electric engine shut down system 2" receiver socket, front and rear Front and rear rectangular ground lugs (4) 59" radial outriggers w/18"x20" feet, 45° mounts (4) 18,000 lb D-rings Wooden side wall/deck 2 sets of parts & service manuals Standard one year warranty
1-Man open cab ROPS certified to 24,000 lbs Roll Over Protection Structure ISO 3471:2008 Seat with mechanical suspension, 2-point seat belt Full instrumentation, illuminated panel gauge Fire extinguisher, backup alarm and horn High powered LED lights: 2 front & 1 rear on cab, 1 strobe on top, rear back up light Cab entrance step, 2x removable side deck ladders 120v block heater & glow plugs, muffler 12v primary fuel filter heater	Secondary fuel filter with water separator Oil cooler for hydraulic reservoir Electric engine shut down system 2" receiver socket, front and rear Front and rear rectangular ground lugs (4) 59" radial outriggers w/18"x20" feet, 45° mounts (4) 18,000 lb D-rings Wooden side wall/deck 2 sets of parts & service manuals Standard one year warranty		

*Specifications subject to change without notice.

DPM-52 DU Carrier Options & Accessories

Front bumper in place of plow
Front 2 way plow (light brush clearing blade)
19" height extension for plowing snow
Front plow blade with float position

DPM-52 DU Carrier Options continued on next page

DPM-52 DU Carrier Options continued

16,500 lb electric winch with front wiring
Electric winch rear wiring
(2) Side receivers for electric winch with wiring
Front mount storage for electric winch when hydraulic winch equipped
18,000 lb hydraulic winch, fixed front mount with in cab controls

Cab Options

Driver's front wire mesh screen (open cab)
Driver's left side wire mesh door and side wall (open cab)
Driver's right side wire mesh screen (open cab)
Driver's rear wire mesh screen (open cab)
Aluminum escape hatch for open cab (required when four sides wire mesh)
Steel escape hatch for open or closed cab (adds FOPS Certification)
Opening sunroof (hinged escape hatch with adjustable opening)
Tinted safety glass escape hatch with adjustable opening (not FOPS certified)
Protective brush guard for front LED work lights
Cab mounted front brush guard for closed cab
1 Man Closed Cab ROPS certified to 24,000 lbs includes: Aluminum escape hatch Sliding left & right side window Cab heater & circulation fan Front windshield on/off wiper & windshield washer Door with dual locking system
Front windshield intermittent wiper (closed cab)
Sun visor
Driver's 3 point seat belt
Street side and / or curb side rear view mirror
Street side rear view mirror with electric heating
Back up camera with heated lens and 7" in-cab waterproof display
Outrigger deployed in-cab warning light
Premium cab sound & heat insulation
DC Comfort air conditioning 6,000 BTU/hr, 12V

Lighting Options

GoLight Stryker spotlight on top of cab with guarding & in cab & hand held remote control
2x 120 watts LED light bars (behind the cab, swiveling & one fixed over the engine cover)
4x 18 watts around the vehicle ground illumination LEDs (low profile 40° down-angle)
DOT road lighting (includes outrigger mounted clearance lights)
Outrigger mounted clearance lights

DPM-52 DU Carrier Options continued on next page

DPM-52 DU Carrier Options continued

Engine & Cold Weather Options

Spark arrestor
12v engine coolant heater, 17,000 Btu with 7 day programmable timer
120v hydraulic oil tank heater
120v battery charger
Synthetic engine oil
Winter bridge & engine cover
Insulated battery box
Coolant battery heater
2x 120v battery heaters
Glycol coolant
Synthetic hydraulic oil
1,800 watt gas powered portable generator / inverter with on deck storage

Track Options

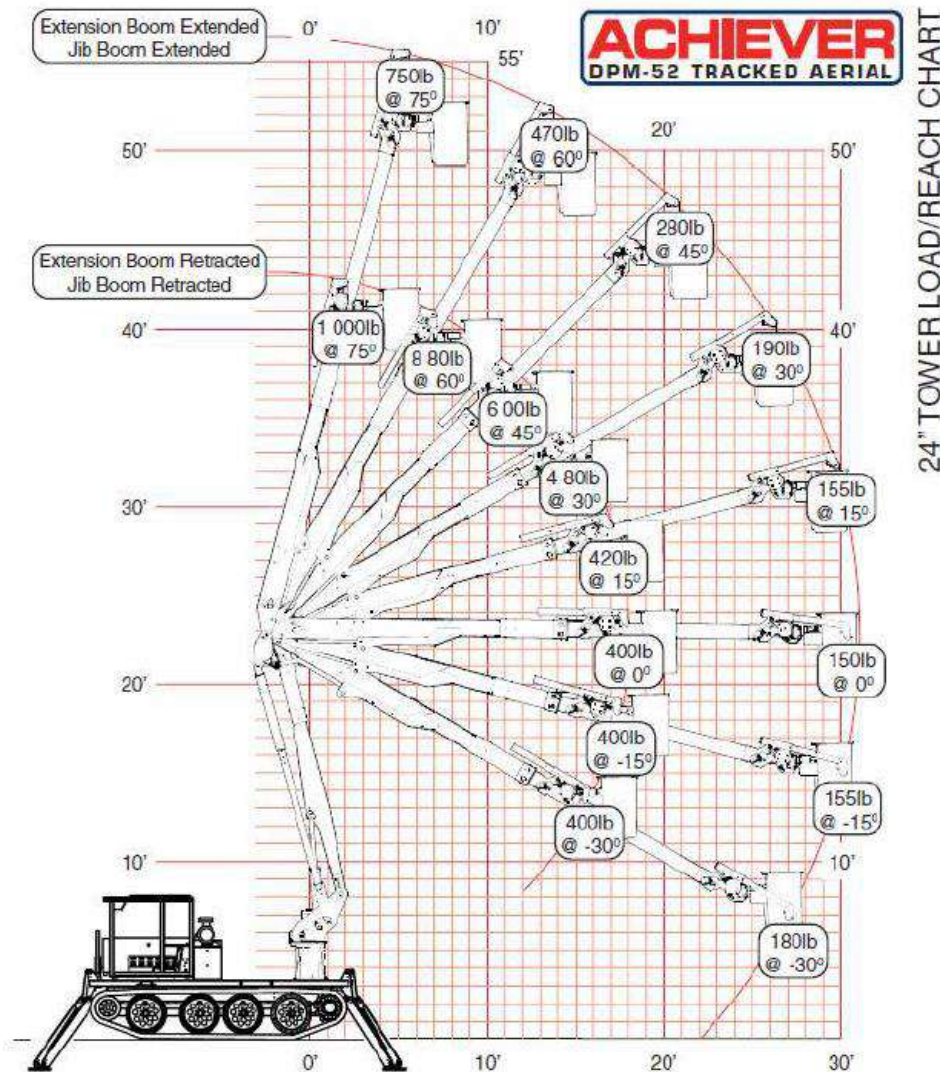
Change 29" to 33" rubber tracks
Ice claws for tracks (17 each side)

Vehicle Options / Features

Tool box on deck (front right side)
Cargo tie downs on deck, 2,000 lb capacity (2x D-rings, 2x tie down posts)
Non slip coating on deck
Change 59" to extra long front outriggers (71 In) for higher lift on Hills w/18"x20" feet (allows deck levelling to within 5° on 12° slopes)
Change 59" to extra long rear outriggers (71 In) for higher lift on Hills w/10"x10" feet (allows deck levelling to within 5° on 12° slopes)
Ice Cleats for outrigger feet (4 each foot)
Outrigger feet ice cleat ready
(8) Road wheel oil hubs
Hydraulic tools outlet on deck with hose reel with twin orange dielectric hoses 3/8"(dia) x 30'(Lg) and flow control
Cable grounding reel on deck, spring loaded, 50 ft 1/0 black cable & clamp
Pintle hook
Maintenance kit (high performance filter set for first 100 hour maintenance Return & Supercharge Filters)
Additional sets of boom and carrier manuals
Additional Available Options
Recommended spare parts for remote operations
One full day on site operations and maintenance training

Other options available upon request

Achiever DPM-52 DU 55 ft Tracked Aerial with Jib



March 2014

WWW.UTVINT.COM

1-800-985-8665



BUCKET/JIB USAGE RESTRICTIONS

2 MAN BUCKET

- Bucket capacity = 550lb
- Bucket capacity with liner = 500lb
- Jib use;
 - Bucket capacity restricted to 400lb
 - Bucket capacity with liner restricted to 350lb
 - Jib capacity as shown on load chart





DPM-52 Side Mount Winch & Jib
Achiever DPM-52 DU Dimensions

